

Language: english

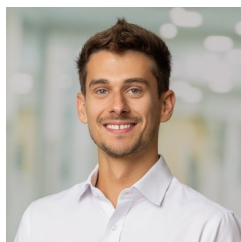
Danube Lodge

Josef-Fritsch-Weg 1
1020 Wien

Apartment Top W 173

Effective area	Loggia	Rooms	Floor
38,20 m ²	3,78 m ²	2 Rooms	6. OG

Total rent
€ 997,43

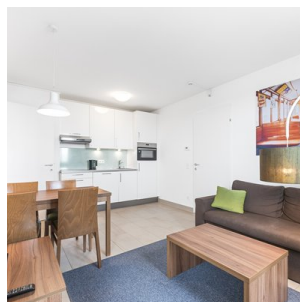
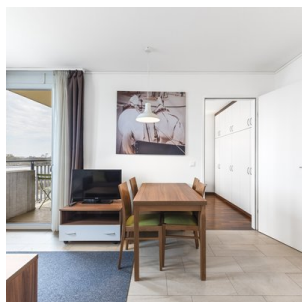


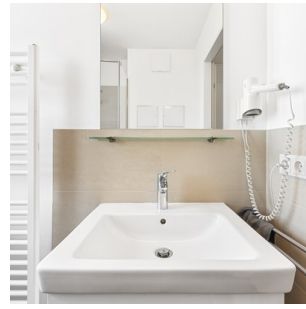
Raffael Aulehla

Telephone
[0800 80 80 90](tel:0800808090)

E-Mail
raffael.aulehla@ig-immobilien.com

Pictures





Details

Locations

Bus: 77A, 79A, U-Bahn Nähe: U2, Aussichtslage,
In unmittelbarer Nähe: Ärzte, Apotheken, Geschäfte des täglichen Bedarfs,
Naherholungsgebiete, Schulen, Kindergärten

Style
2013

Energy Certificate
, 0 kWh/m²a

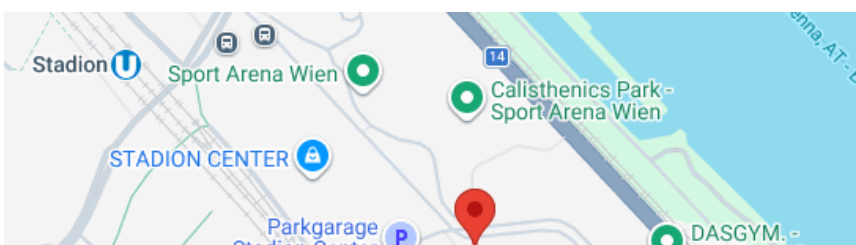
Cost Details

Monthly Costs	€/m ²	VAT %	NET	PRE-TAX
Rent	17,30	10	726,25	798,87
Operating Costs *	2,63	10	110,41	121,45
Heating Costs **	0,88	20	36,94	44,33
Water costs **	0,27	10	11,33	12,46
Hot water costs **	0,44	10	18,47	20,32
Total	21,52	-	903,40	997,43

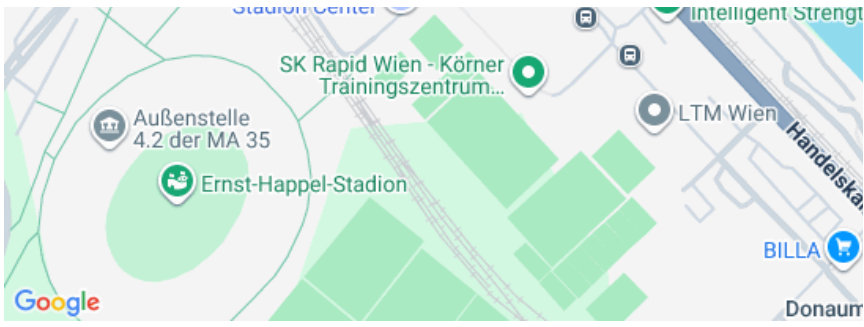
***) Heating costs are invoiced according to consumption or per square metre depending on the type of object at the end of each year and are included in the total costs as prepayment.

One-time costs	€
Deposit	44 884,35

Maps



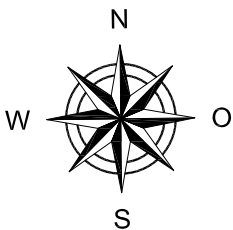
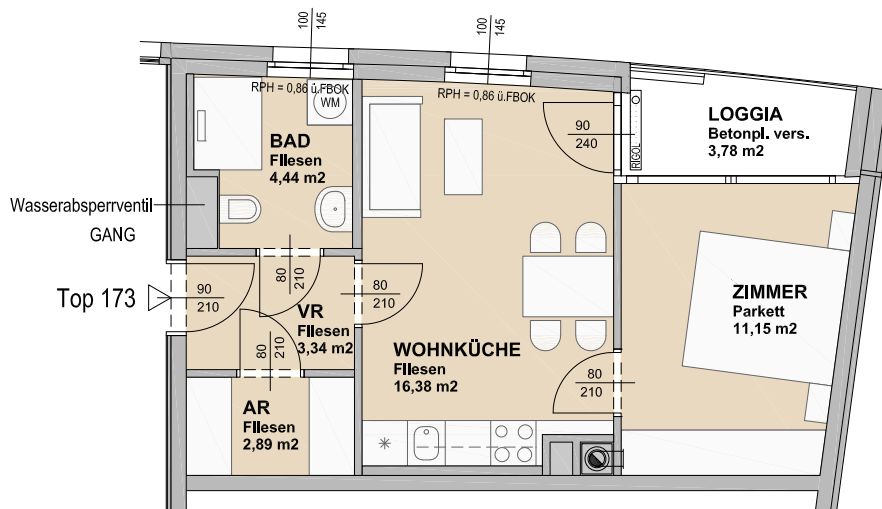
Address
Danube Lodge
Josef-Fritsch-Weg 1



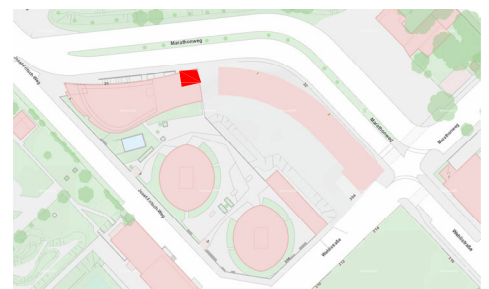
1020 Wien

Josef-Fritsch-Weg 1,3,5 1020 Wien 6.OG - Top 173

Nutzfläche: 38,20 m²
Loggia: 3,78 m²
Eigentümer: IG Immobilien Invest GmbH



LAGEPLAN - genordet



Die in den Plänen vorhandenen Abmessungen sind nicht für die Bestellung von Einbaumöbeln verwendbar - Naturmaße nehmen erforderlich! Änderungen vorbehalten! Die Einrichtung ist illustrativ dargestellt, Ausstattung lt. gültiger BAB.